

# WIFI IP Camera Quick User Guide

## Statement

1. Sincerely thanks for purchasing our products, please contact us if any question or requirement .
2. This user manual may contain incorrect place in technology, place not matching with product function or operation, or printing mistake.
3. We will update our user manual according to our updating in product, and will periodically improve or updating the product and programming. The updating content will add in the new user manual , we won't inform.
4. If the product's description in user manual is inconsistent with the real products, please based on the real products.

# 1. IP Camera Application Diagram:



**NOTE:**

Please first connect the WIFI IP camera with switch by network cable, and setup WIFI configuration in browser, then you can plug out the network cable.

Mobile Preview for ESCAM WIFI IP camera Quick Guide Steps:

1. Connect power and network cable with IP camera and switch
2. Search the IP address and login Internet Explorer Browser on computer
3. Setup WIFI Configurations in Internet Explorer Browser
4. After WIFI connected successfully then you can plug out the network cable.
5. Download APP: P2PWiFiCam, add IP camera in APP and preview.

## 2. IP Camera Connectors



### 2.1 Power input

Connection with power adapter: DC12V 1A

### 2.2 RJ45 LAN Port

10/100M adaptive RJ45 network cable interface which could be connected to all network devices, such as switch, router, etc.

Indicator description:

Plug in power, green and yellow lights on,

Plug in RJ45 cable, green light off, yellow light on and blinking

### 3. IP Address Search

**NOTE:**

For IP search tool , which can be downloaded from [goo.gl/CO70Wl](http://goo.gl/CO70Wl) or [goo.gl/00vu3z](http://goo.gl/00vu3z)

IPCSearch Ver1.4

Language: English Mode: Unicast Search Web Reboot

No.	IP	DevID	Name	Mask	GateWay	H...	MAC	Version
1	192.168.1.136	VVVIC1508255380HSDS-2b17DwnR871	IPCAM	255.255.255.0	192.168.1.1	80	C0:76:C0:D4:FD:A3	V2.3.5.2505-S50-SMA-B20151...

Device Info

Name: IPCAM IP TYPE: Fixed IP Address

Port: 80 IP: 192 . 168 . 1 . 136

Mac: C0:76:C0:D4:FD:A3 Mask: 255 . 255 . 255 . 0

Type: IPC GateWay: 192 . 168 . 1 . 1

Version: V2.3.5.2505-S50-SMA-B20151 DNS1: . . .

DNS2: . . .

User: admin Password: \*\*\*\*\* Modify

Upgrade

Select Upgrade File Upgrade

Factory default settings of IP camera:

IP address: 192.168.1.136

Subnet mask: 255.255.255.0

Gateway: 192.168.1.1

Http Port: 80

RTSP Port: 554

IP TYPE: Fixed IP Address and Dynamic IP address

Step1: Search IP address

Step2: Modify IP Address

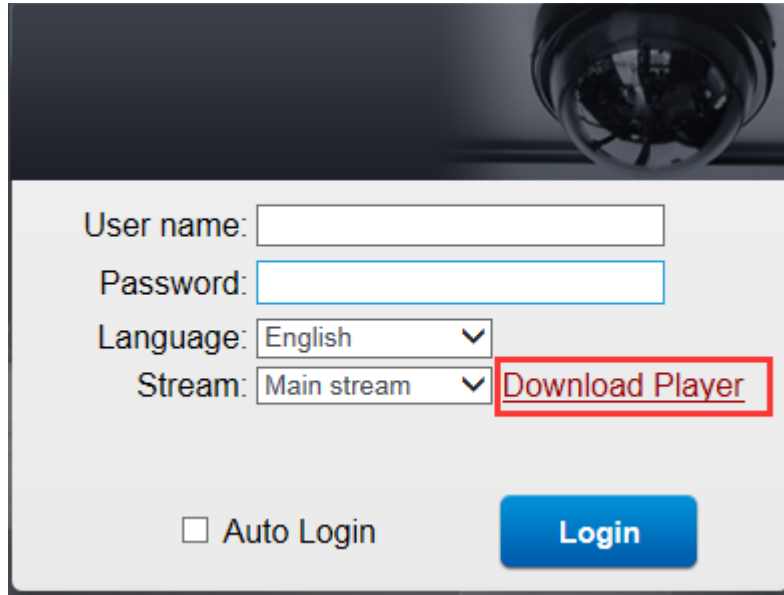
Make sure the IP Camera and the computer are in the same network segment in one LAN

## 4. Internet Explorer Browser Preview

Input IP address: 192.168.1.136 (default)

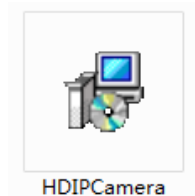
User name: admin; Password: admin

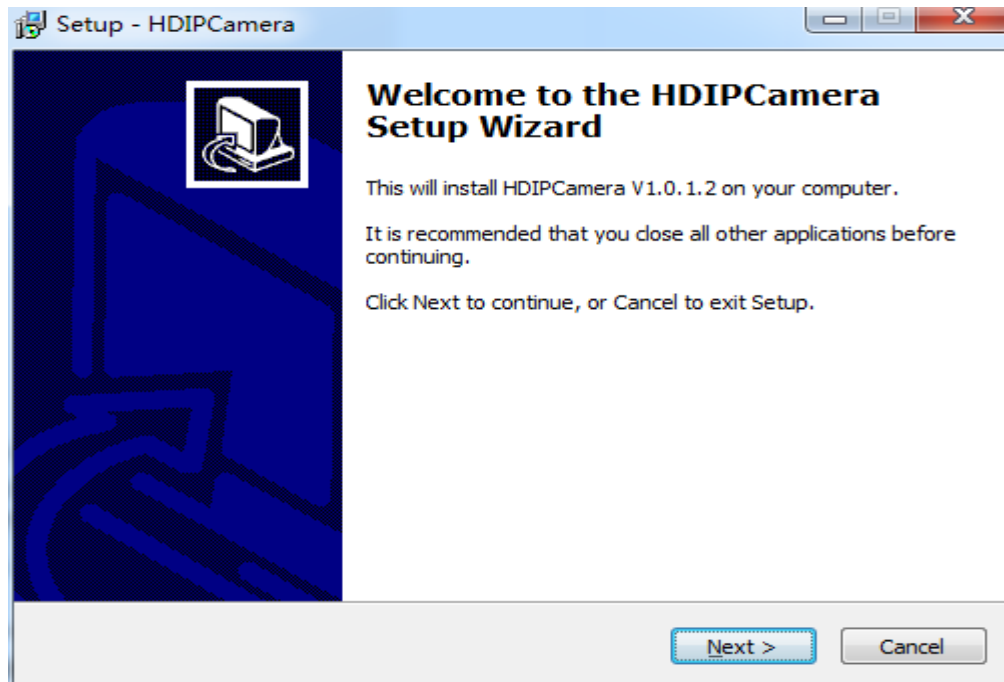
Note: Please modify the password for security



4.1 Download "Player"

4.2 Install and run the player (please close the browser while installing)





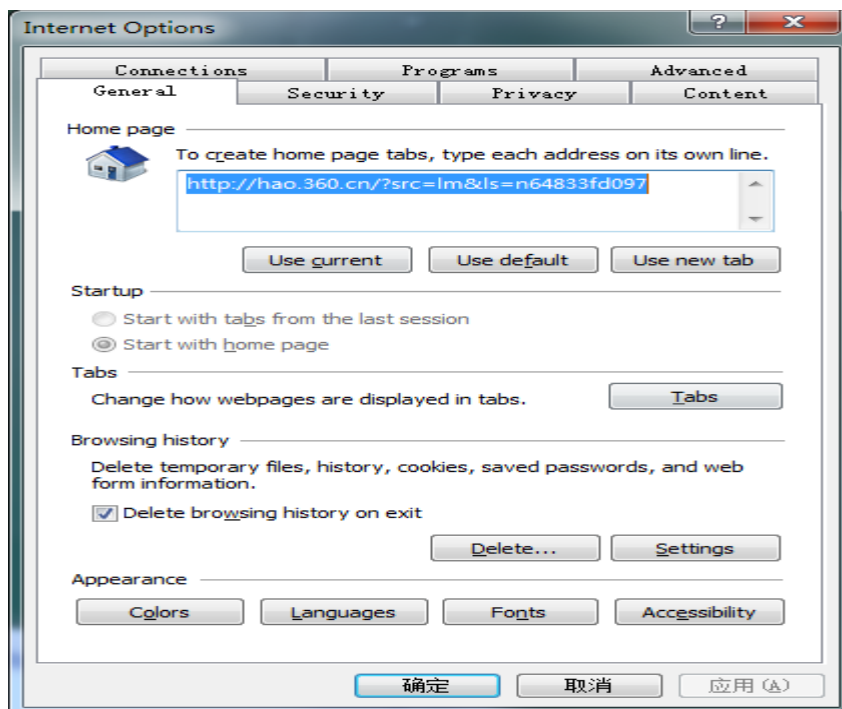
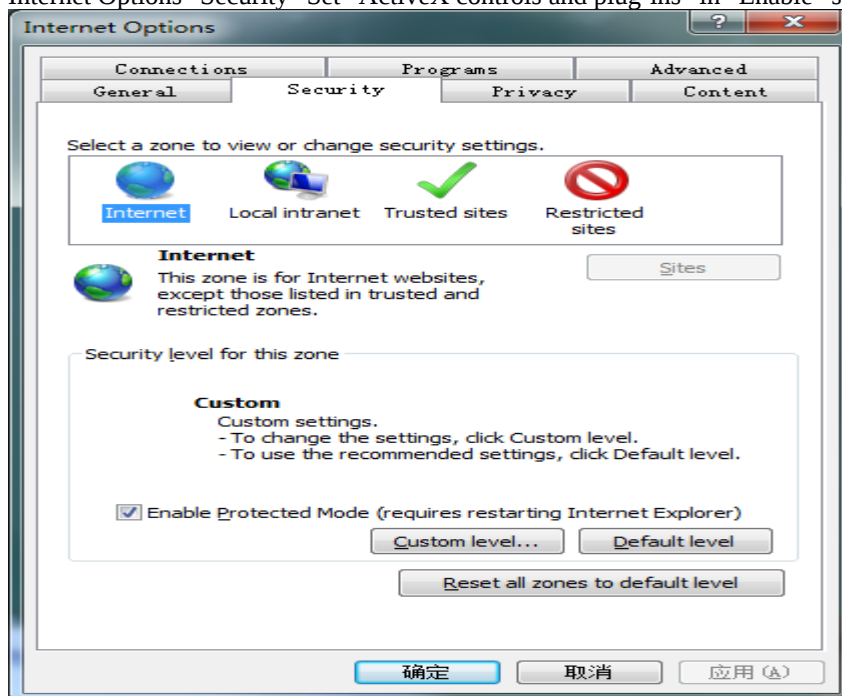
#### 4.3 Re-login the IP camera in Internet Explorer

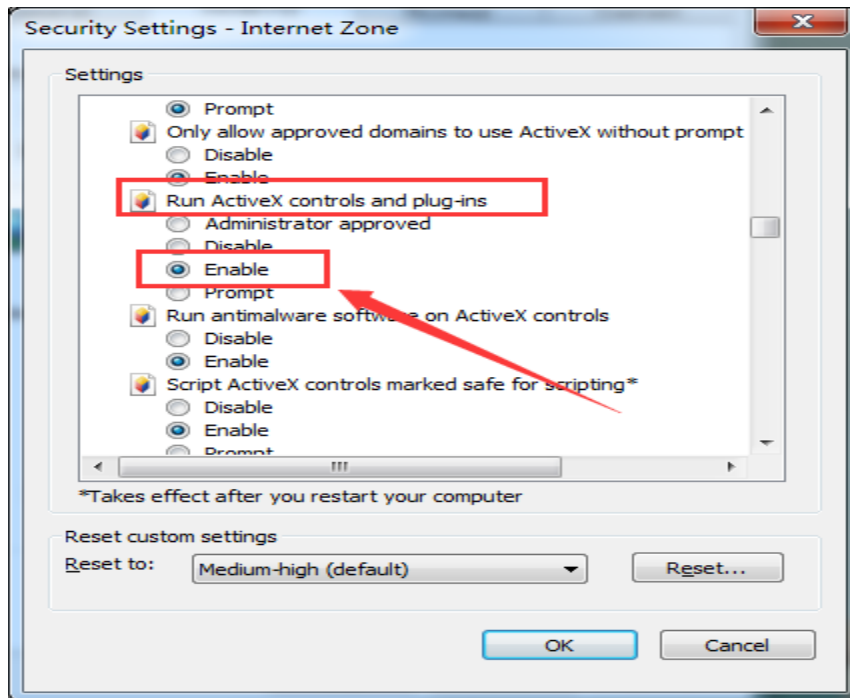
After login, you need allow running the player (ActiveX controller to display the camera image)

#### 4.4 Allow Running "ActiveX controller"

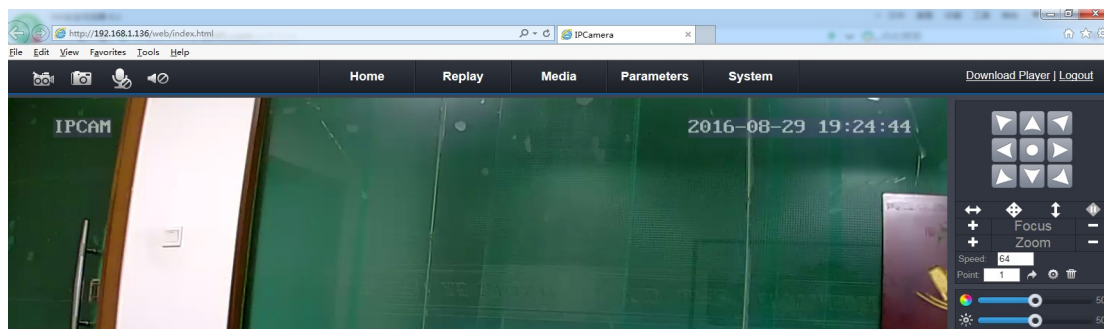
NOTE: if the ActiveX controller download was not disabled, please open Internet Explorer--Settings--

Internet Options--Security--Set "ActiveX controls and plug-ins" in "Enable" status.





After setup as above operations, the image will be displayed as below shown

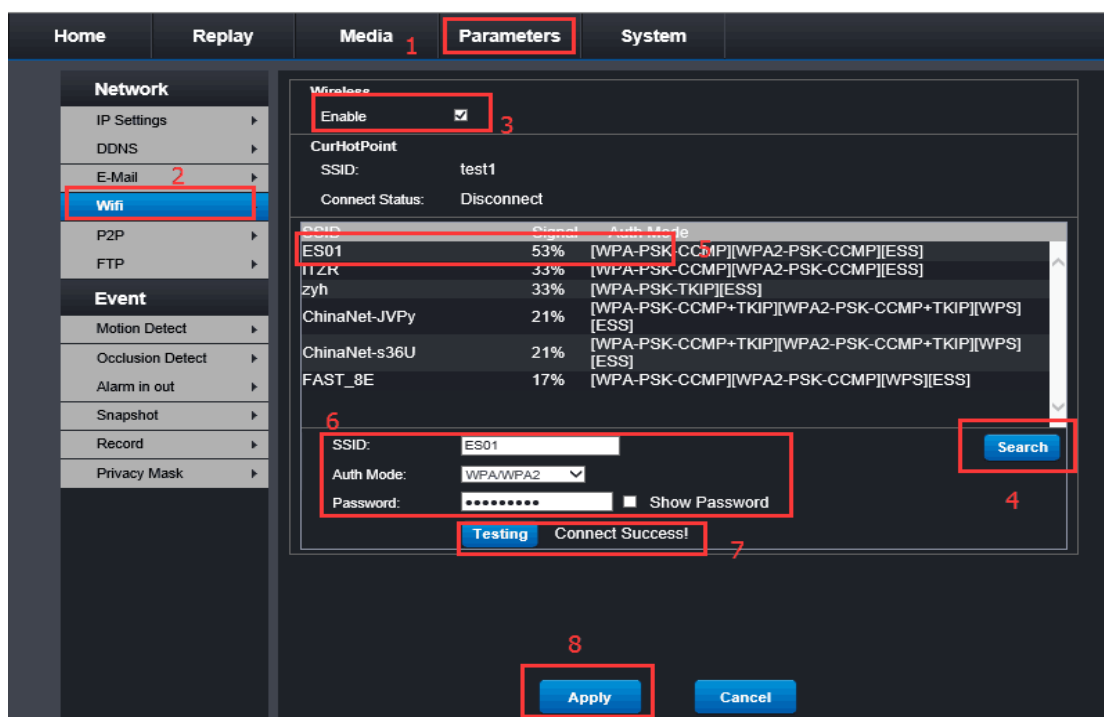


#### 4.5 WIFI Setup Configuration

4.5.1 Select "parameter" option, and select "WIFI" Option

4.5.2 Enable WIFI Status, search the WIFI list and select one WIFI Signal, input password(**Note: Password can not contain special characters**); click "Test", if successful, then click "Apply", then wait about 30 seconds and refresh browser.



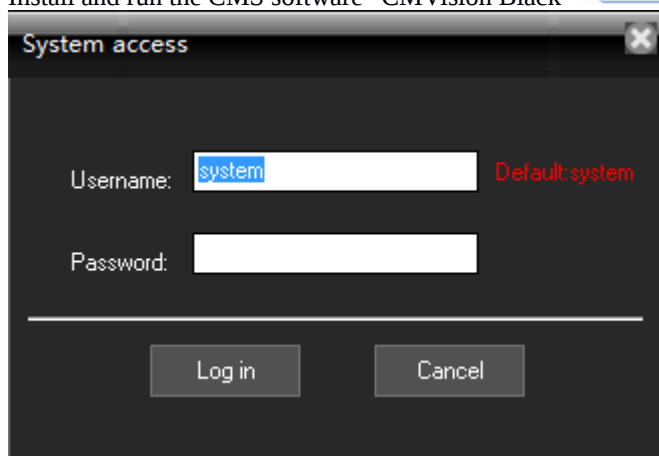
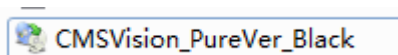


#### NOTE:

For detailed IE Operation, please kindly refer to “IE Operating Instruction Manual” document, which can be downloaded from [goo.gl/CO70W1](http://goo.gl/CO70W1) or [goo.gl/00vu3z](http://goo.gl/00vu3z)

## 5. CMS Preview

Install and run the CMS software “CMVision Black”



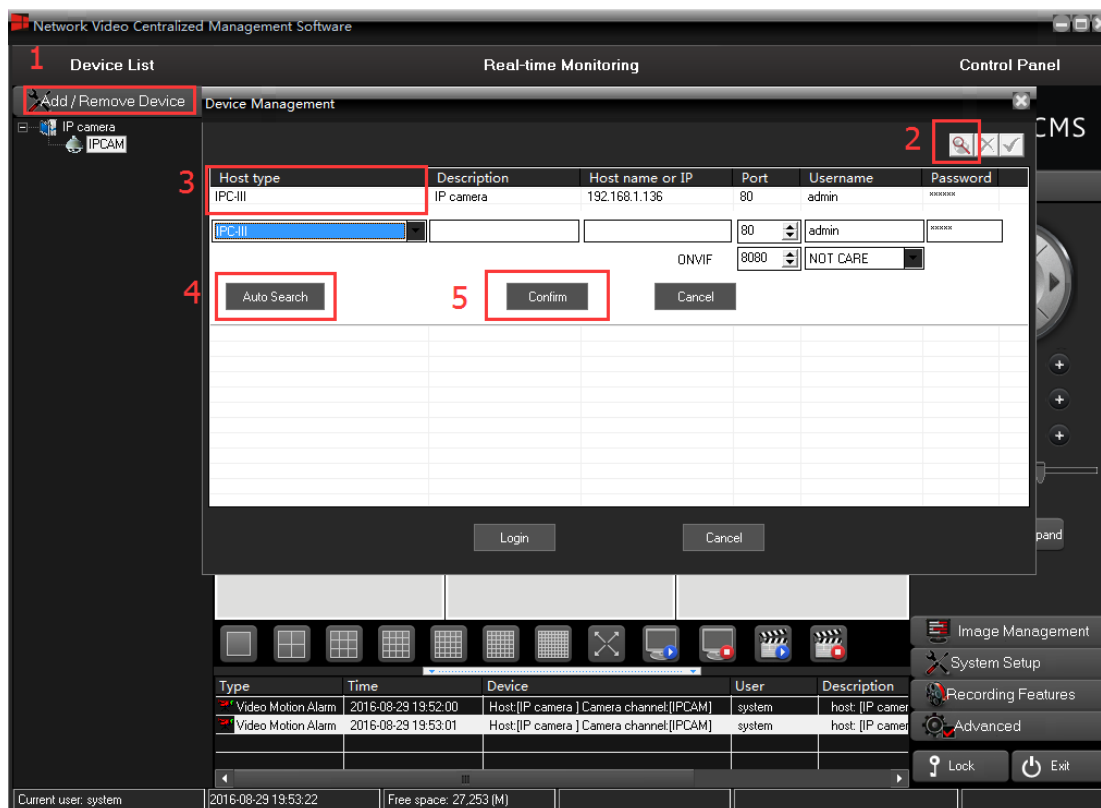
Login CMSVision Software

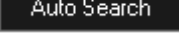
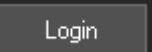
User name: system

No Password

5.1 Add IP camera

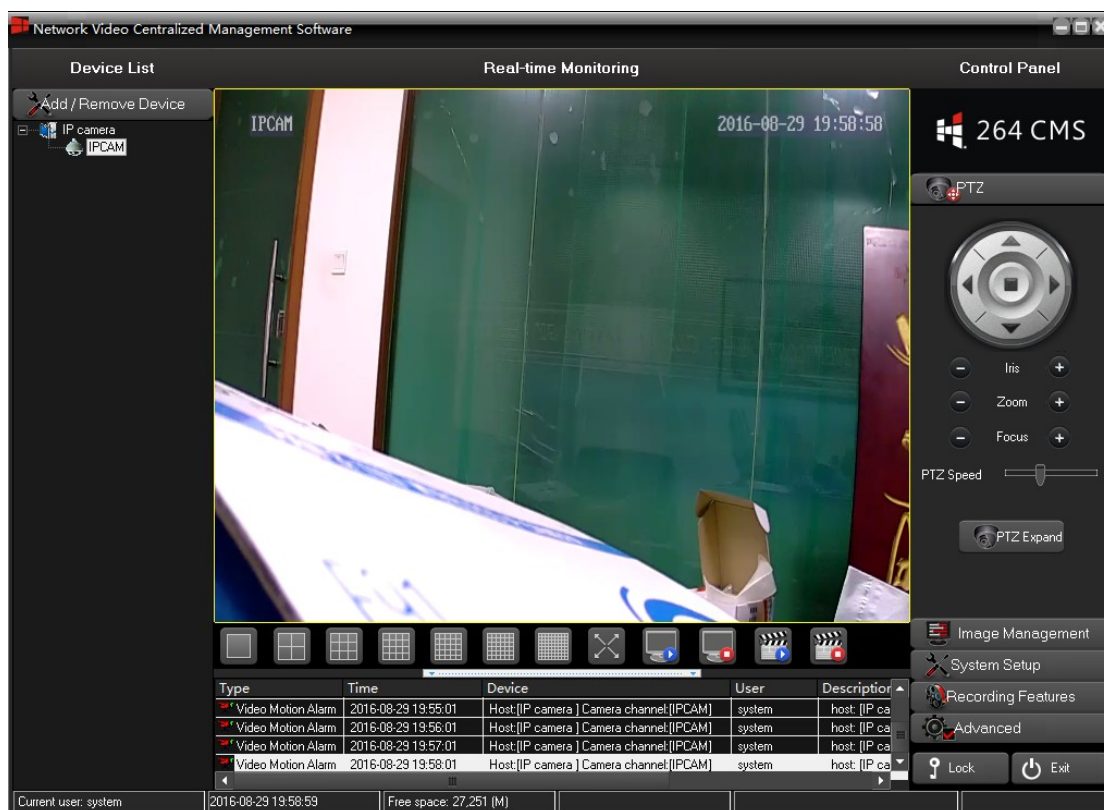
5.1.1 Click “Add/Remove Device”  button, click  search button in “Device Management” window, and select “IPC-III”  as Host Type, as shown below:



Click “Auto Search”  button, you will see the IP camera list. Select the IP camera to add, and click “Login” , then you will successfully add the IP camera in CMS Software

## 5.2 IP Camera Preview in CMS

After add camera successfully, go back to the previous interface. Double click the IP camera option, the image will come out, as shown below:



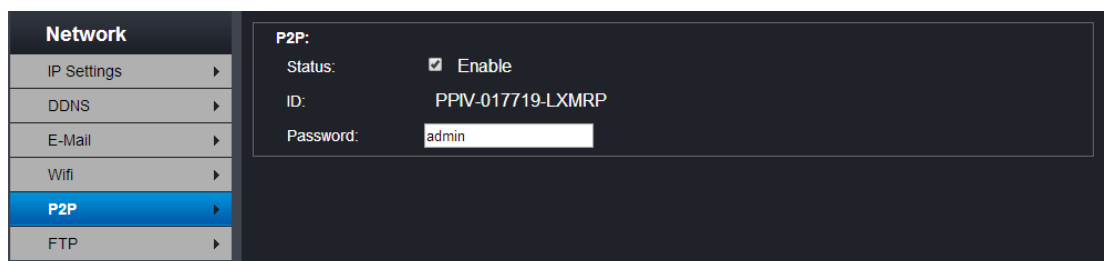
## **NOTE:**

For detailed CMS Software Operation, please kindly refer to “CMS Manual EN” document, which can be downloaded from [goo.gl/CO70W1](http://goo.gl/CO70W1) or [goo.gl/00vu3z](http://goo.gl/00vu3z)

## **6. Mobile Preview**

### **Note:**

1. Please make sure you can access camera on computer before you view camera by app
2. Please make sure the P2P Status is “Enable”, as shown below:



6.1 Mobile Preview APP Name: P2PWIFICAM  
Support iPhone/Android Mobile



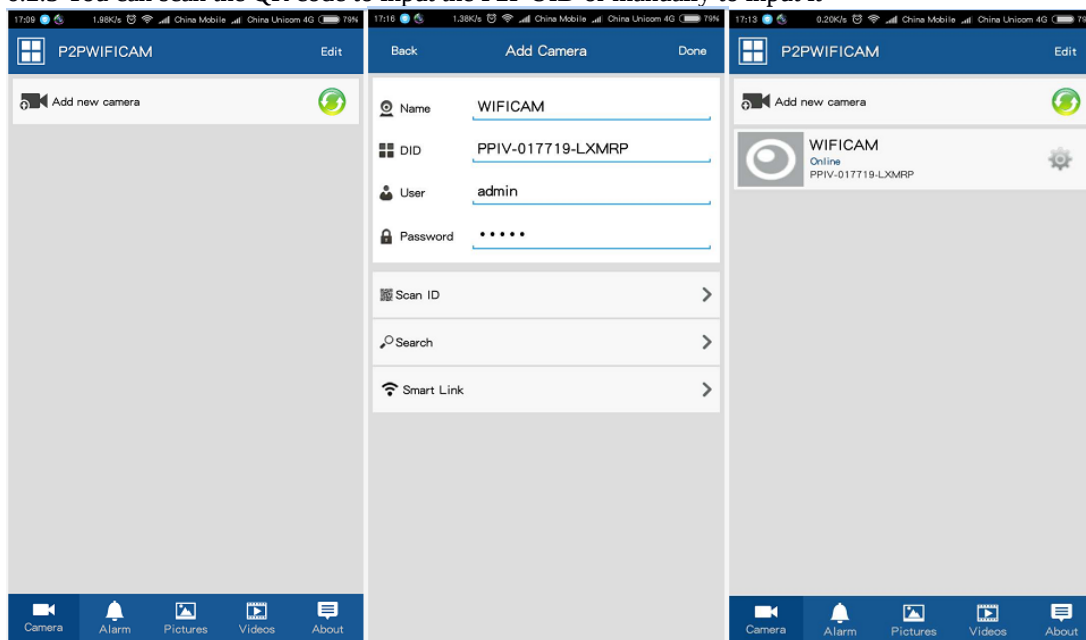
P2PWIFICAM2 4+  
Ka Ming Cheung >

6.2 Download APP: P2PWIFICAM from Google Play or APP Store

6.2.1 Open and run app in your mobile

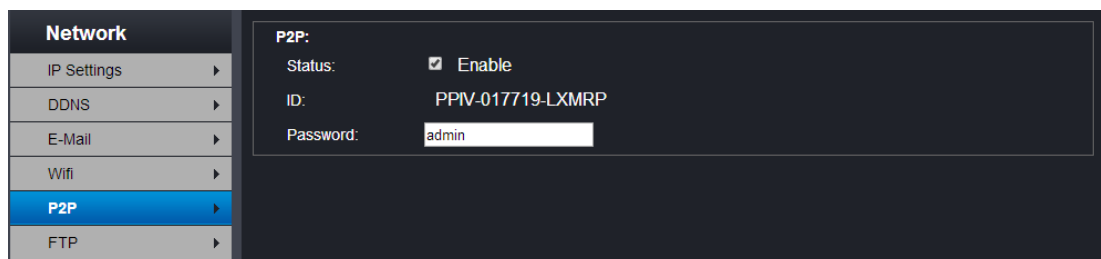
6.2.2 Input the P2P UID (Generally it will be wrote on the sticker of the IP camera or packing box)

6.2.3 You can scan the QR code to input the P2P UID or manually to input it



6.3 Input user name and password

Default User name: admin; password: admin



Note: Please modify the password for security

6.4 Save the above information, then you can see the image in mobile app.



## FAQ

1. What kind operate system was supported?

Support windows XP/windows 7 /windows8/windows10, not support MAC OS PC system, but support Mobile APP of Android/iPhone/iPad

2. What kind Web browser was supported?

Support Internet Explorer and Firefox only, not support Google Chrome

3. What is the default user name and password?

Default User name: admin; Password: admin

4. How to solve the problem of cannot find the IP address by search tool?

Please ensure the IP camera and computer in the same network segment or not, that is meaning, under one router.

5. How to solve the problem of IP camera could be searched, but can not login in browser?

A. Check the IP camera and computer if in the same network segment

For example:

If the computer IP address is 192.168.1.1, then the IP address of the IP camera should be 192.168.1.\*;

If the computer IP address is 192.168.0.1, then the IP address of the IP camera should be 192.168.0.\*

B. Check if the IP address conflict between the IP camera and others devices

6. How to solve the problem of can not see picture in web browser?

Kindly check if install the ActiveX controller or not;

If the Internet Explorer browser was blocked the Plug-ins, please let it enable "ActiveX" controller to download and install.

7. How to solve the problem of p2p menu lost?

Please kindly contact by Email: support @escam.cn , and providing the p2p UID, we will re-add it.

8. How to solve the problem of WIFI connection failed?

A. Check if the IP camera and the WIFI router was too far away,

B. Check if the IP camera password was correct. (WIFI password can not contain special characters, such as %, &, spaces, etc. )

C. When WIFI test succeeded, please wait about 30 seconds, and refresh the page.

9. How to solve the problem of failed to setup Email alarm alert?

A. Check if your Email open SMTP service

B. Check if the Email password is correct

C. Please change one Email to test and change SMTP port, general port was 25, 465, 587.

**Attached**

Software link: [goo.gl/CO70Wl](http://goo.gl/CO70Wl) or [goo.gl/00vu3z](http://goo.gl/00vu3z)

Operation video: [goo.gl/GdkeT7](http://goo.gl/GdkeT7)